

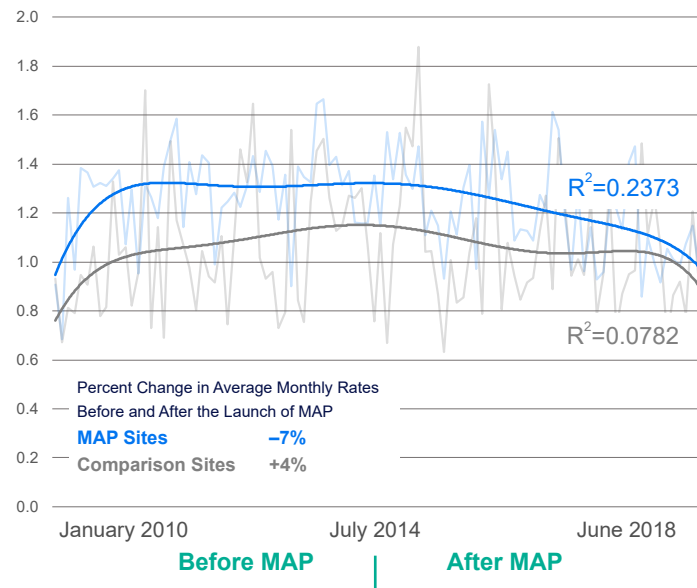
TECHNICAL APPENDIX ACCOUNTING FOR LONG-TERM TRENDS IN KEY OUTCOMES

The fitted trend lines in the graphs that follow are not meant to be explanatory and they do not indicate the extent to which meaningful differences exist between trends in MAP sites and comparison sites. Instead, they highlight general trends in what are otherwise volatile outcome measures. Each graphic supports the need for additional analysis.

NYPD COMPSTAT CATEGORIES

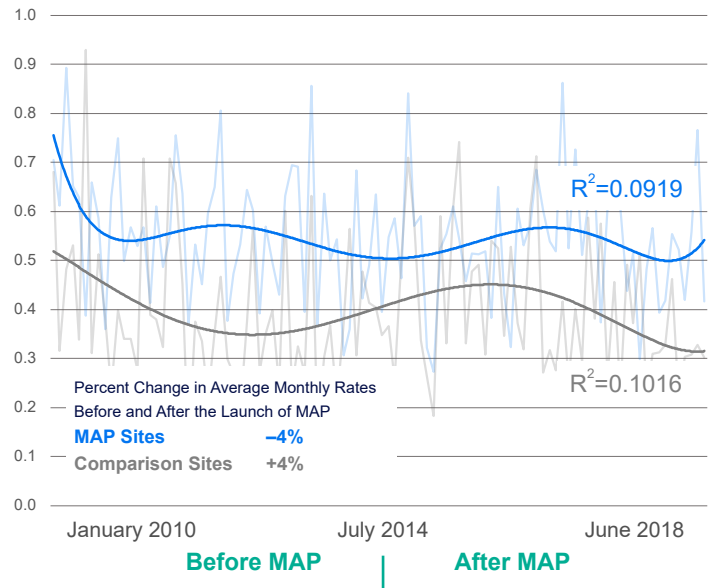
SEVEN MAJOR FELONY COMPLAINTS

Rate per 1,000 Residents



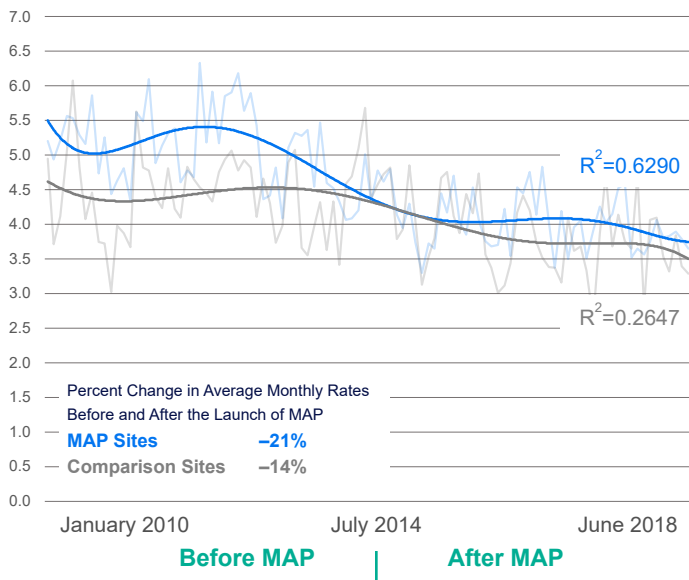
NON-SEVEN MAJOR FELONY COMPLAINTS

Rate per 1,000 Residents



MISDEMEANOR COMPLAINTS

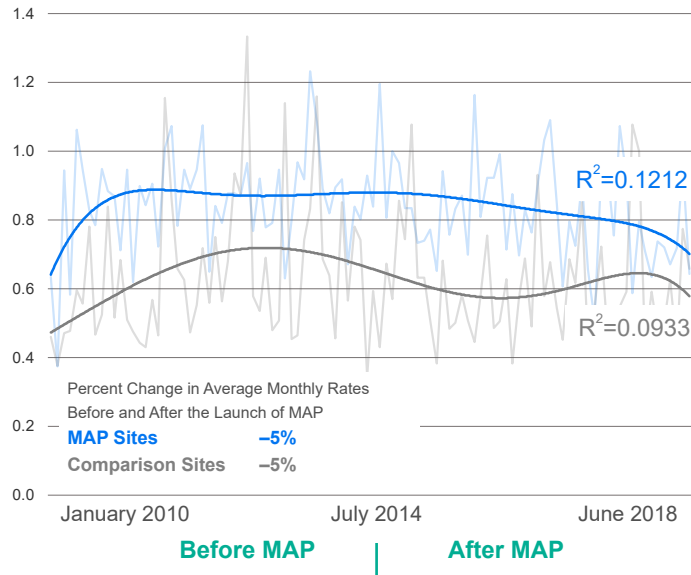
Rate per 1,000 Residents



ALTERNATE OFFENSE CATEGORIES

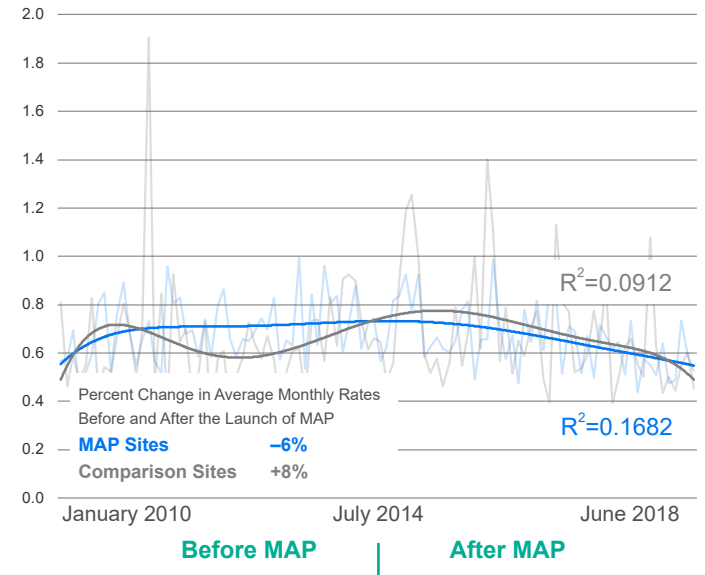
PERSON-RELATED FELONY COMPLAINTS

Rate per 1,000 Residents



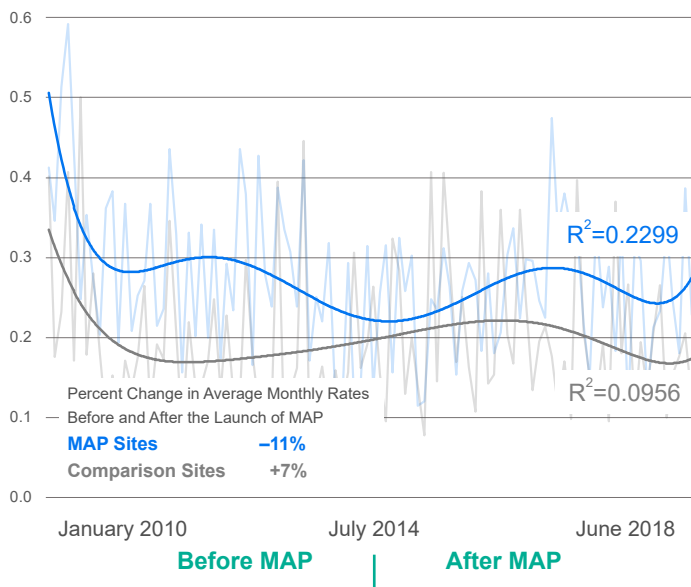
PROPERTY-RELATED FELONY COMPLAINTS

Rate per 1,000 Residents



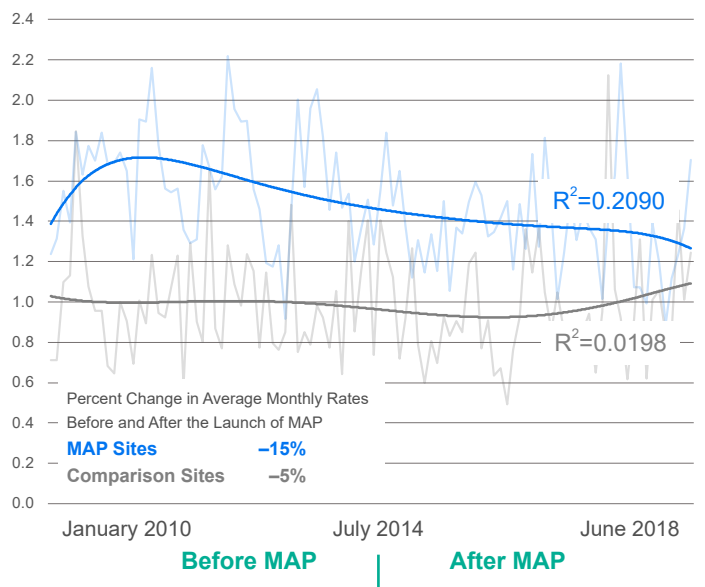
DRUG/WEAPON FELONY COMPLAINTS

Rate per 1,000 Residents



PERSON-RELATED MISDEMEANOR COMPLAINTS

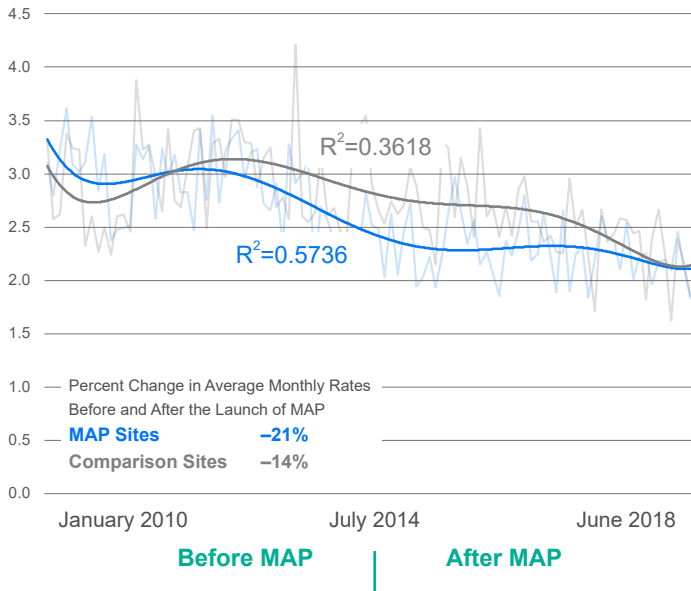
Rate per 1,000 Residents



ALTERNATE OFFENSE CATEGORIES (CONT.)

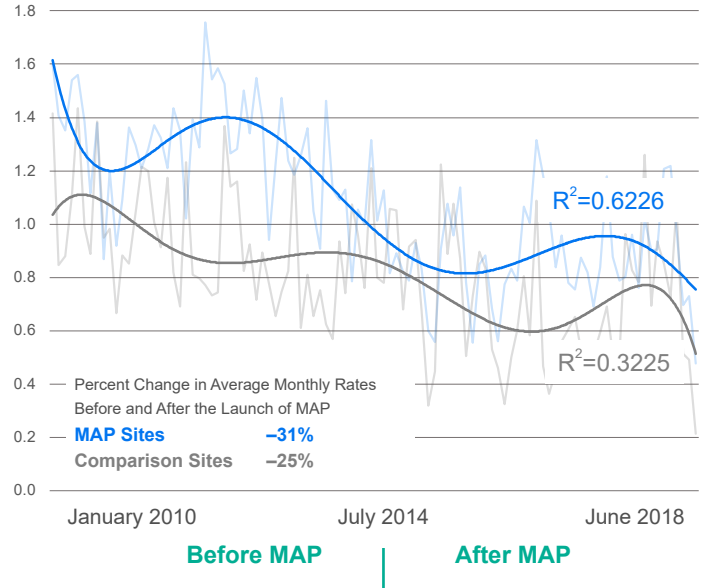
PROPERTY-RELATED MISDEMEANOR COMPLAINTS

Rate per 1,000 Residents



OTHER MISDEMEANOR COMPLAINTS

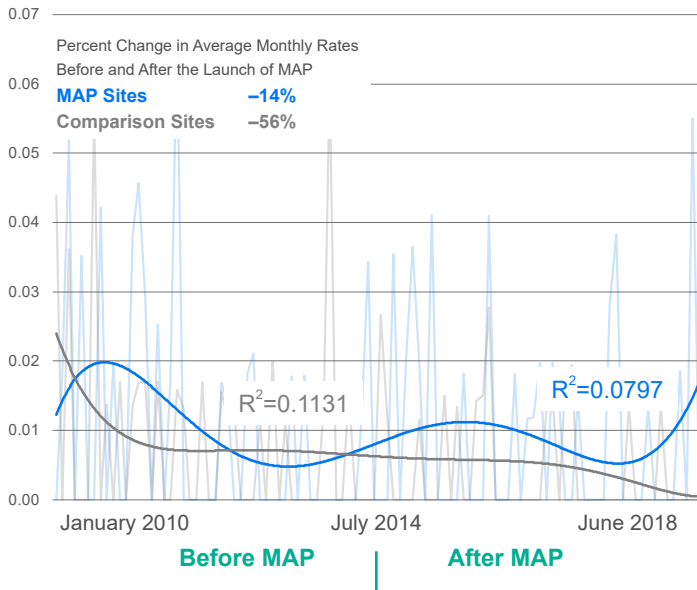
Rate per 1,000 Residents



VICTIMIZATIONS (NYPD DATA)

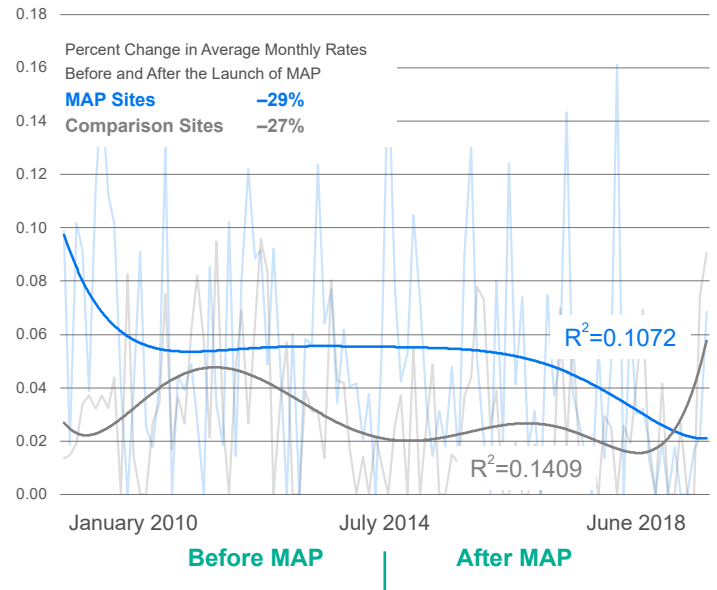
HOMICIDE VICTIMIZATIONS

Rate per 1,000 Residents



SHOOTING VICTIMIZATIONS

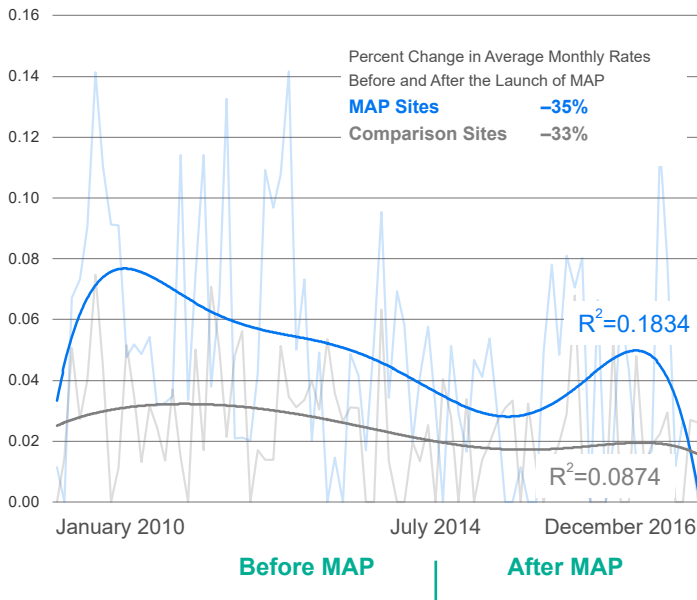
Rate per 1,000 Residents



VICTIMIZATIONS (SPARCS DATA)

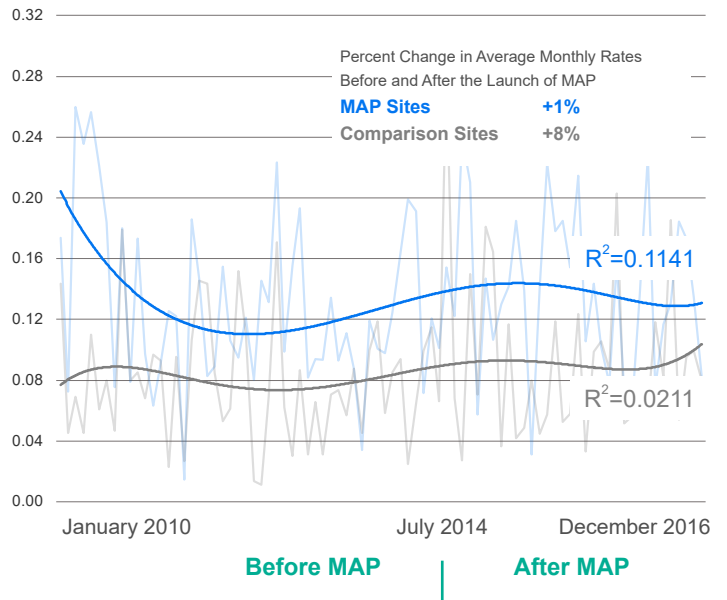
GUNSHOT INJURY TREATMENT EPISODES

Rate per 1,000 Residents



STABBING INJURY TREATMENT EPISODES

Rate per 1,000 Residents



RESEARCH AND EVALUATION CENTER



The John Jay College Research and Evaluation Center (JohnJayREC) is an applied research organization within John Jay College of Criminal Justice in New York City. The Center provides members of the academic community with opportunities to respond to the research needs of justice practitioners in New York City, New York State, and the nation. At any given time, the Center is working on several projects to discover, test, and improve programs and policies in the justice system. The Center operates under the supervision of John Jay College's Office for the Advancement of Research.